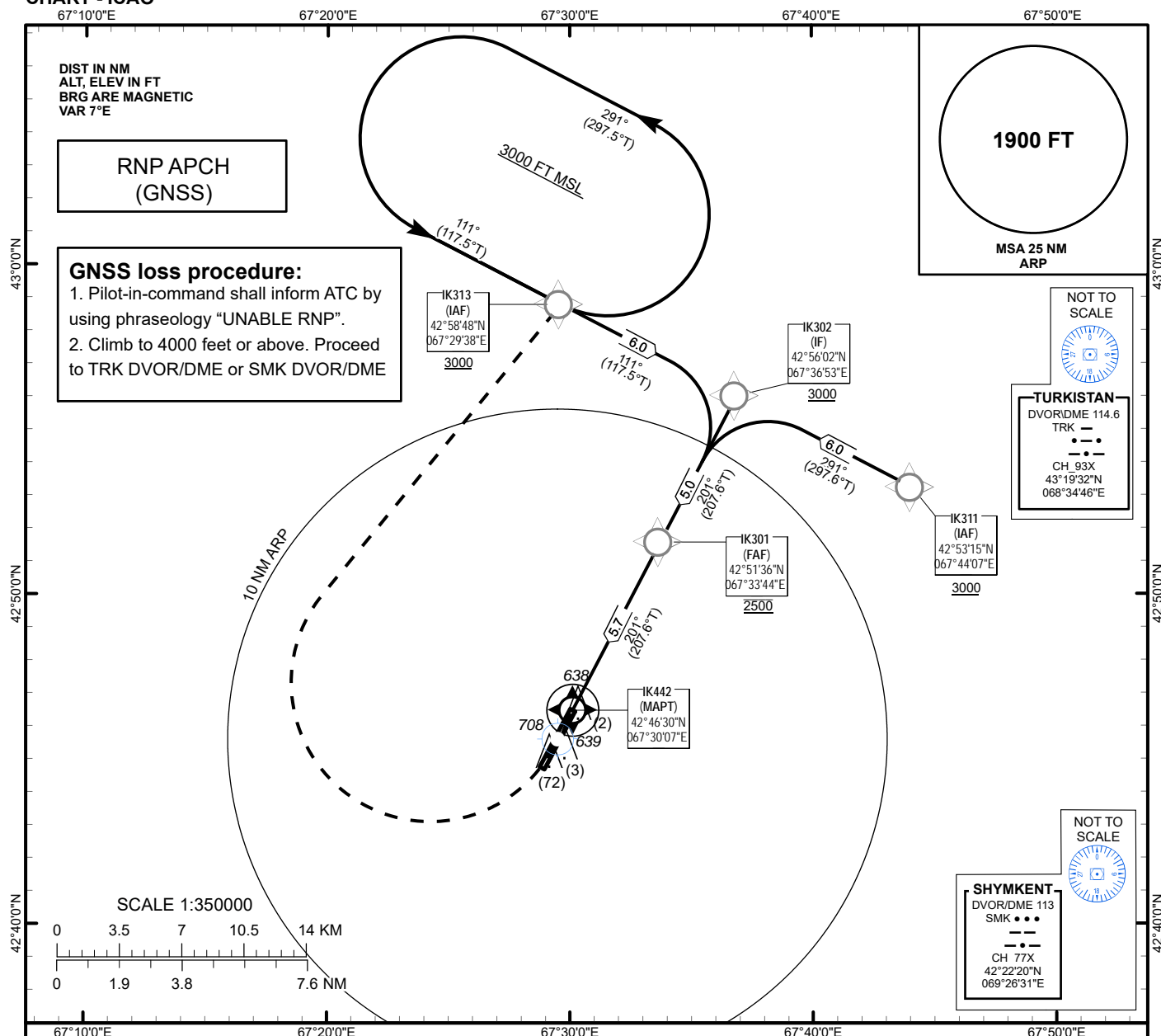


INSTRUMENT
APPROACH
CHART - ICAOAERODROME ELEV **636 FT**
HEIGHTS RELATED TO
AD ELEVTOWER FREQ
SEE NOTAMBOZHBAN
RNP RWY 20L

MISSED APPROACH:
TURN RIGHT DIRECT TO IK313,
CLIMBING TO 3000 OR ABOVE.

TRANSITION ALT 10000 FT

FAF
IK301
2500IF
IK302
3000MAPt
IK442

THR ELEV 634 FT



OCA(OCH)		A	B	C	D
Straight	LNAV	890(250)			
	LNAV/VNAV				

DIST THR	1	2	3	4	5
ALTITUDE	1000	1320	1640	1950	2270
HEIGHT	(364)	(684)	(1004)	(1314)	(1634)

GS	Kt	80	100	120	140	160	180
Rate of descent	ft/min	490	610	730	850	970	1090
FAF-MAPt(5.7NM)	min:sec	4:17	3:25	2:51	2:27	2:08	1:54

TABULAR DESCRIPTION
RNP APCH IAP
RWY 20L

Serial Number	Path Descriptor	Waypoint Identifier	Fly - over	Course °M(°T)	Magnetic Variation(°)	Distance NM	Turn Direction	Altitude FT	Speed KT	VPA (°)	Navigation Specification
010	IF	IK311	-		+6.54	-	-	+3000	-	-	RNP APCH
020	TF	IK302	-	291(297.6)	+6.54	6.0	-	+3000	-	-	RNP APCH
010	IF	IK313	-		+6.54	-	-	+3000	-	-	RNP APCH
020	TF	IK302	-	111(117.5)	+6.54	6.0	-	+3000	-	-	RNP APCH
010	IF	IK302	-		+6.54	-	-	+3000	-	-	RNP APCH
020	TF	IK301	-	201(207.6)	+6.54	5.0	-	@2500	-	-	RNP APCH
030	TF	IK442	Y	201(207.6)	+6.54	5.7	-	@686	-	-3	RNP APCH
040	DF	IK313	-		+6.54	25.5	R	+3000	-	+1.4	RNP APCH

WAYPOINT LIST

RNP APCH IAP RWY 20L		
Waypoint Identifier	Coordinates	
IK301	42°51'35.68"N	067°33'43.85"E
IK302	42°56'01.68"N	067°36'52.96"E
IK311	42°53'14.78"N	067°44'07.19"E
IK313	42°58'48.11"N	067°29'38.09"E
IK442	42°46'29.72"N	067°30'06.94"E